

# 1999-2004 Radius Arm Conversion Installation Instructions



**Congratulations! You have just purchased the best engineered, highest quality front air suspension kit available on the market for your 99-04 Super Duty Pickup. When installed, this kit will allow complete control and adjustability over your truck's suspension. Be sure to fully read and understand the instructions before starting your installation. As in any suspension installation, it is the installer's responsibility to assure a correct installation. The installer is also responsible for providing adequate clearances between vehicle components such as axles, shocks, exhaust and mechanical linkages to ensure a safe and reliable installation.**

## **WARNING**

**DO NOT EXCEED THE MANUFACTURER'S RECOMMENDED GROSS VEHICLE WEIGHT RATING (GVWR).**

1. Raise the vehicle until wheels are off the ground and support with jack stands under the frame.
2. Support the front axle with jack stands and remove the wheels.

**Extreme caution should be used in the next few steps to prevent personal injury and/or property damage. Make sure springs are unloaded before attempting to remove them. Failure to do so can cause the spring to eject. Use a floor jack to find the “neutral” position of the springs before removal.**

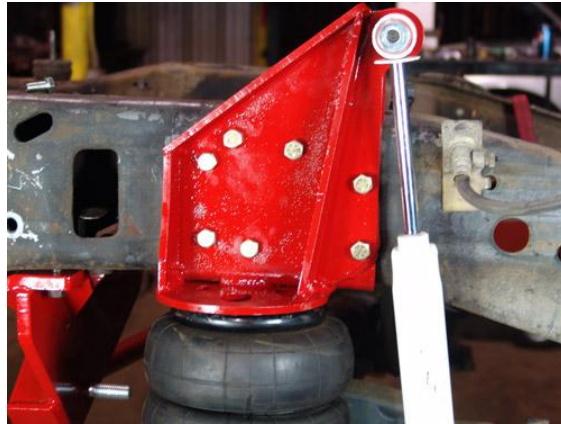
3. Remove the leaf springs and the shackle assembly
4. Remove the original upper shock towers
5. Install the new radius arm mounts on the frame under the cab. The 4 holes on the side of the mount line up with existing holes in the frame. Drill the 3 remaining holes up through the bottom of the frame and tighten the bolts securing the bracket.



6. Install the upper and lower halves of the axle radius arm mounts. The lower half will fit snugly against the axle and leaf spring pad and the upper half will locate in the centering pin of the leaf spring pad. Install 9/16"-11 x 7" bolts and tighten.



7. Install the radius arm in the axle mounts with the shock mount facing the outside of the truck. Note that the lower bushing has an eccentric that allows up to 5 degrees of caster adjustability. Be sure to use the included eccentric adjusters and bolt.
8. Mount the upper bag mount/shock mount to the frame. The mounting holes line up with existing holes in the frame.



9. Use the supplied low head socket head cap screws on the 3 holes on the bottom of the frame. It is important that they mount flush with the bag mount so as not to interfere with the bag when it is mounted
10. Install the air bag and the factory shocks in their new mounts
11. Remove the factory pitman arm, track bar and track bar mount and replace them with the new components,
12. Be sure to tighten all hardware after installation for the hangers, radius arms, axle mounts, bag and shock brackets, track bar, and track bar bracket Check again after 50 miles of driving
13. Add and remove air to bags and articulate suspension.
14. Adjust caster to factory specs at ride height with adjustable eccentric bolts on the lower radius arm mounts. Use the heim joint to adjust the axle front to back so it is centered in the wheel wells.